



# Summer Garden...

Secret Garden fabric designed by Lynette Anderson Designs

 Quilt size 68" x 68" | Visit Lynette's Blog <http://www.lynetteandersondesigns.typepad.com>

Quilt Design and Instructions by Cate Tallman-Evans | Sample Made by Kay Harmon



To view the Secret Garden fabric collection and to download Lynette Anderson's free pattern, please visit [www.lecien.co.jp/en/hobby/](http://www.lecien.co.jp/en/hobby/) 

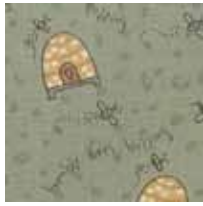
**LECIEN U.S.A., Inc.**

[www.lecienusa.com](http://www.lecienusa.com) | [info@lecienusa.com](mailto:info@lecienusa.com)

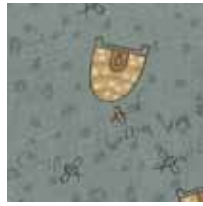
# Secret Garden Fabrics for the Summer Garden Quilt



30409 10  
2 fat quarters



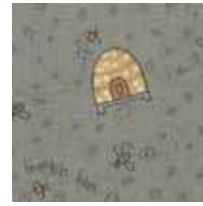
30409 60  
1 fat quarter



30409 70  
1 fat quarter



30409 80  
1 fat quarter



30409 90  
1 fat quarter



30410 10  
1 fat quarter



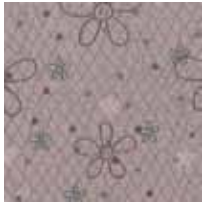
30410 60  
1 fat quarter



30410 70  
1 fat quarter



30410 80  
1 fat quarter



30410 110  
1 fat quarter



30411 10  
1 fat quarter



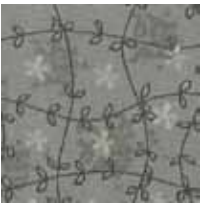
30411 60  
1 fat quarter



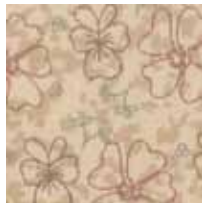
30411 70  
1 fat quarter



30411 80  
1 fat quarter



30411 90  
1 fat quarter



30412 10  
2 fat quarters



30412 60  
1 fat quarter



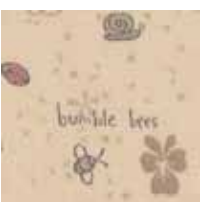
30412 70  
1 fat quarter



30412 80  
1 fat quarter



30412 71  
1 fat quarter



30413 10  
1 fat quarter



30413 90  
1 fat quarter



30413 70  
1 fat quarter



30413 80  
1 fat quarter



30413 110  
1 fat quarter



30414 10  
2 fat quarters



30414 61  
1 fat quarter  
+ 1 yard



30414 70  
1 fat quarter



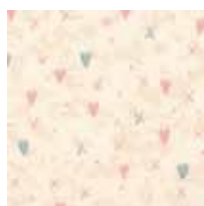
30414 80  
1 fat quarter



30414 60  
1 fat quarter



30415 11  
1 fat quarter



30415 10  
1 fat quarter



30415 70  
1 fat quarter

# Summer Garden

## Additional Materials

Template plastic

All supplies for your chosen method of appliqué,

*Note: appliqué templates do not include seam allowances and are not reversed.*

Scrap of black fabric for birds' eyes and beaks

(4) yards of 1/4" wide black ribbon for bows and bird tails

(90) 1/4" - 3/8" black buttons, beads or other

embellishment for flower centers

4 1/2 yards cream bee hive print (30409-10) for quilt backing

76" x 76" piece of batting

Usual sewing and rotary cutting supplies

## Cutting Instructions

*Note: All strips are cut across the width of the fabric from selvage edge to selvage edge.*

*Reserve all uncut yardage for appliqués.*

### From the (6) darker blue fat quarters:

Set (1) fat quarter aside for the bird appliqués.

### From the remaining (5) fat quarters, cut a total of:

- (3) 6 1/2" x 6 1/2" squares
- (1) 4 1/2" x 6 1/2" piece
- (2) 4 1/2" x 4 1/2" squares
- (32) 2 1/2" x 2 1/2" squares for the outer border

### From the (2) lighter blue fat quarters, cut a total of:

- (3) 6 1/2" x 6 1/2" squares
- (2) 4 1/2" x 6 1/2" pieces
- (1) 4 1/2" x 4 1/2" square
- (1) 2 1/2" x 4 1/2" piece

### From the (6) brown fat quarters:

Set aside (3) fat quarters for the flower, birdhouse, and heart appliqués.

### From the remaining (3) fat quarters, cut a total of:

- (1) 8 1/2" x 8 1/2" square
- (4) 6 1/2" x 6 1/2" squares
- (1) 6 1/2" x 12 1/2" piece
- (1) 4 1/2" x 8 1/2" piece
- (1) 4 1/2" x 4 1/2" square
- (24) 2 1/2" x 2 1/2" squares for the outer border

### From the (3) gray fat quarters:

Set aside (1) fat quarter for the watering can appliqué.

### From the remaining (2) fat quarters, cut a total of:

- (2) 6 1/2" x 6 1/2" squares
- (1) 4 1/2" x 8 1/2" piece
- (2) 4 1/2" x 4 1/2" squares
- (16) 2 1/2" x 2 1/2" squares for the outer border

### From the (2) purple fat quarters cut a total of:

- (2) 6 1/2" x 6 1/2" squares
- (1) 4 1/2" x 12 1/2" piece
- (4) 4 1/2" x 8 1/2" pieces
- (1) 2 1/2" x 6 1/2" piece
- (16) 2 1/2" x 2 1/2" squares for the outer border

### From the (2) lightest green fat quarters:

Set aside (1) fat quarter for the watering can appliqué.

From the second fat quarter, cut:

- (2) 6 1/2" x 6 1/2" squares
- (2) 4 1/2" x 6 1/2" pieces

### From the (2) medium green fat quarters:

From (1) fat quarter, cut:

- (8) 2 1/2" x 2 1/2" squares for the outer border

From the second fat quarter, cut:

- (1) 8 1/2" x 8 1/2" square
- (1) 6 1/2" x 6 1/2" square
- (1) 4 1/2" x 12 1/2" piece
- (2) 4 1/2" x 4 1/2" squares
- (8) 2 1/2" x 2 1/2" squares for the outer border

### From the (2) darkest green fat quarters:

Set aside (1) fat quarter for the birdhouse appliqués.

From the second fat quarter, cut:

- (2) 6 1/2" x 6 1/2" squares
- (1) 4 1/2" x 12 1/2" piece
- (1) 2 1/2" x 6 1/2" piece
- (2) 2 1/2" x 4 1/2" pieces

### From the darkest green yardage, cut:

- (6) 2 1/2" strips for the inner border
- (7) 2 1/4" strips for the binding.

### From the (1) lightest cream fat quarter, cut:

- (4) 8 1/2" x 8 1/2" squares for the outer border

### From the (10) cream fat quarters:

Set aside (1) fat quarter for the birdhouse appliqués

From the remaining (9) fat quarters, for the quilt blocks, cut a total of:

- (2) 8 1/2" x 8 1/2" squares
- (13) 6 1/2" x 6 1/2" squares
- (1) 6 1/2" x 8 1/2" piece
- (2) 4 1/2" x 12 1/2" pieces
- (2) 4 1/2" x 4 1/2" squares
- (1) 2 1/2" x 4 1/2" piece

For the outer border cut a total of:

- (40) 2 1/2" x 6 1/2" pieces
- (64) 2 1/2" x 4 1/2" pieces
- (64) 2 1/2" x 2 1/2" squares

## Sewing Instructions

*Note: All seams are sewn using 1/4" seam allowance with right sides held together and raw edges even. Please refer to the quilt pictured on the cover for specific fabric placement.*

### 1. Layout the patches listed below as shown in the

Row 1 Assembly Diagram on page 2:

- (6) 6 1/2" cream squares, (4) 6 1/2" colored squares,
- (1) 8 1/2" colored square, (1) 4 1/2" x 12 1/2" colored piece, (1) 4 1/2" x 8 1/2" colored piece, (2) 4 1/2" x 6 1/2" colored pieces, (1) 4 1/2" colored square and (1) 2 1/2" x 4 1/2" colored piece.

Stitch the units together as shown to complete Row 1.

### 2. Layout the patches listed below as shown in the

Row 2 Assembly Diagram on page 2:

- (6) 6 1/2" colored squares, (1) 6 1/2" cream square,
- (1) 4 1/2" x 12 1/2" colored piece, (1) 2 1/2" x 6 1/2" colored piece, (1) 4 1/2" x 12 1/2" cream piece,
- (4) 4 1/2" x 8 1/2" colored pieces,
- (3) 4 1/2" colored squares, (2) 4 1/2" cream squares, and (1) 2 1/2" x 4 1/2" colored piece.

Stitch the units together as shown to complete Row 2.

# Summer Garden

## Sewing Instructions (cont.)

3. Layout the patches listed below as shown in the Row 3 Assembly Diagram below:

- (2) 8  $\frac{1}{2}$ " cream squares, (3) 6  $\frac{1}{2}$ " colored squares, (1) 6  $\frac{1}{2}$ " cream square, (1) 6  $\frac{1}{2}$ " x 12  $\frac{1}{2}$ " colored piece, (1) 6  $\frac{1}{2}$ " x 8  $\frac{1}{2}$ " cream piece, (1) 4  $\frac{1}{2}$ " x 12  $\frac{1}{2}$ " colored piece, (1) 4  $\frac{1}{2}$ " x 8  $\frac{1}{2}$ " colored piece, (3) 4  $\frac{1}{2}$ " colored squares, (2) 4  $\frac{1}{2}$ " x 6  $\frac{1}{2}$ " colored pieces, and (1) 2  $\frac{1}{2}$ " x 4  $\frac{1}{2}$ " colored piece.

Stitch the units together as shown to complete Row 3.

4. Layout the patches listed below as shown in the Row 4 Assembly Diagram below:

- (1) 8  $\frac{1}{2}$ " colored square, (6) 6  $\frac{1}{2}$ " colored squares, (5) 6  $\frac{1}{2}$ " cream squares, (1) 4  $\frac{1}{2}$ " x 12  $\frac{1}{2}$ " cream piece, (1) 4  $\frac{1}{2}$ " x 8  $\frac{1}{2}$ " colored piece, (1) 4  $\frac{1}{2}$ " colored square, (1) 2  $\frac{1}{2}$ " x 6  $\frac{1}{2}$ " colored piece, and (1) 2  $\frac{1}{2}$ " x 4  $\frac{1}{2}$ " cream piece.

Stitch the units together as shown to complete Row 4.

5. Stitch the four rows of patches together to complete the quilt center.

## Appliqué

1. Using the paper patterns and template plastic, make templates for each shape.

2. Prepare the number of motifs listed on each paper pattern as required for your chosen method of appliqué. Please note that the templates are not reversed and do not have seam allowances.

placement, appliqué the motifs to the quilt top using your favorite method. Repeat this procedure to appliqué (1) small flower motif to each 8  $\frac{1}{2}$ " lightest cream square for the outer border.

## Finishing

1. Trim the selvages from the 2  $\frac{1}{2}$ " darkest green inner border strips and sew the strips together end to end to make a long 2  $\frac{1}{2}$ " strip. From this long strip, cut (2) 52  $\frac{1}{2}$ " and (2) 48  $\frac{1}{2}$ " lengths. Stitch the shorter lengths to the left and right sides of the quilt top. Sew the longer lengths to the top and bottom.

2. Sew a 2  $\frac{1}{2}$ " colored square to one end of a 2  $\frac{1}{2}$ " x 6  $\frac{1}{2}$ " cream piece. Repeat to make a total of (40) units.

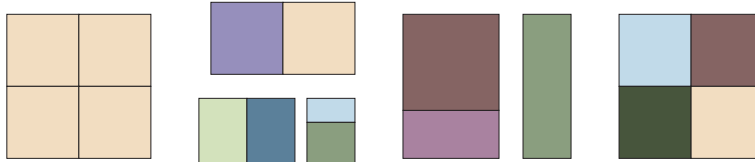
3. Sew a 2  $\frac{1}{2}$ " cream square and a 2  $\frac{1}{2}$ " x 4  $\frac{1}{2}$ " matching cream piece to opposite sides of a 2  $\frac{1}{2}$ " colored square. Repeat to make a total of (64) units.

4. Using the quilt pictured on the cover as a guide, assemble (10) units from step 2 and (16) units from step 3 into (1) pieced outer border unit. Repeat to make a total of (4) units. Sew pieced border units to the left and right sides of the quilt top, noting orientation. Stitch an 8  $\frac{1}{2}$ " lightest cream square to each end of both remaining pieced border units and sew these borders to the top and bottom to complete the quilt top.

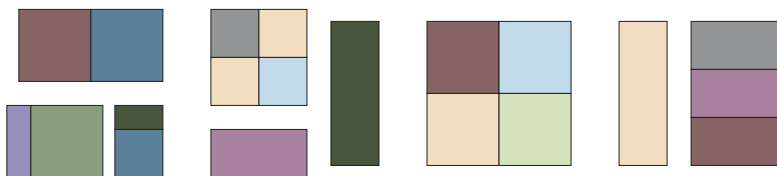
5. Layer the finished quilt top with batting and backing and quilt as desired.

6. Bind the finished quilt using the 2  $\frac{1}{4}$ " darkest green strips.

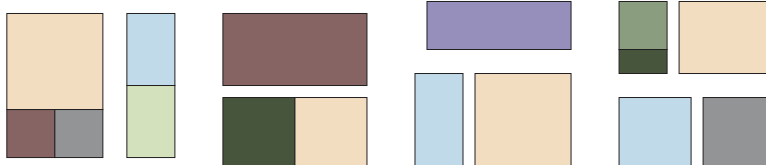
Row 1 Assembly Diagram



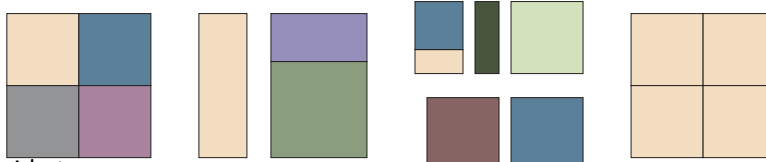
Row 2 Assembly Diagram



Row 3 Assembly Diagram



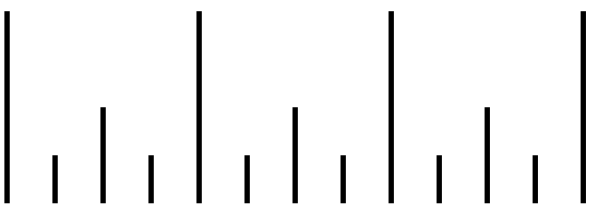
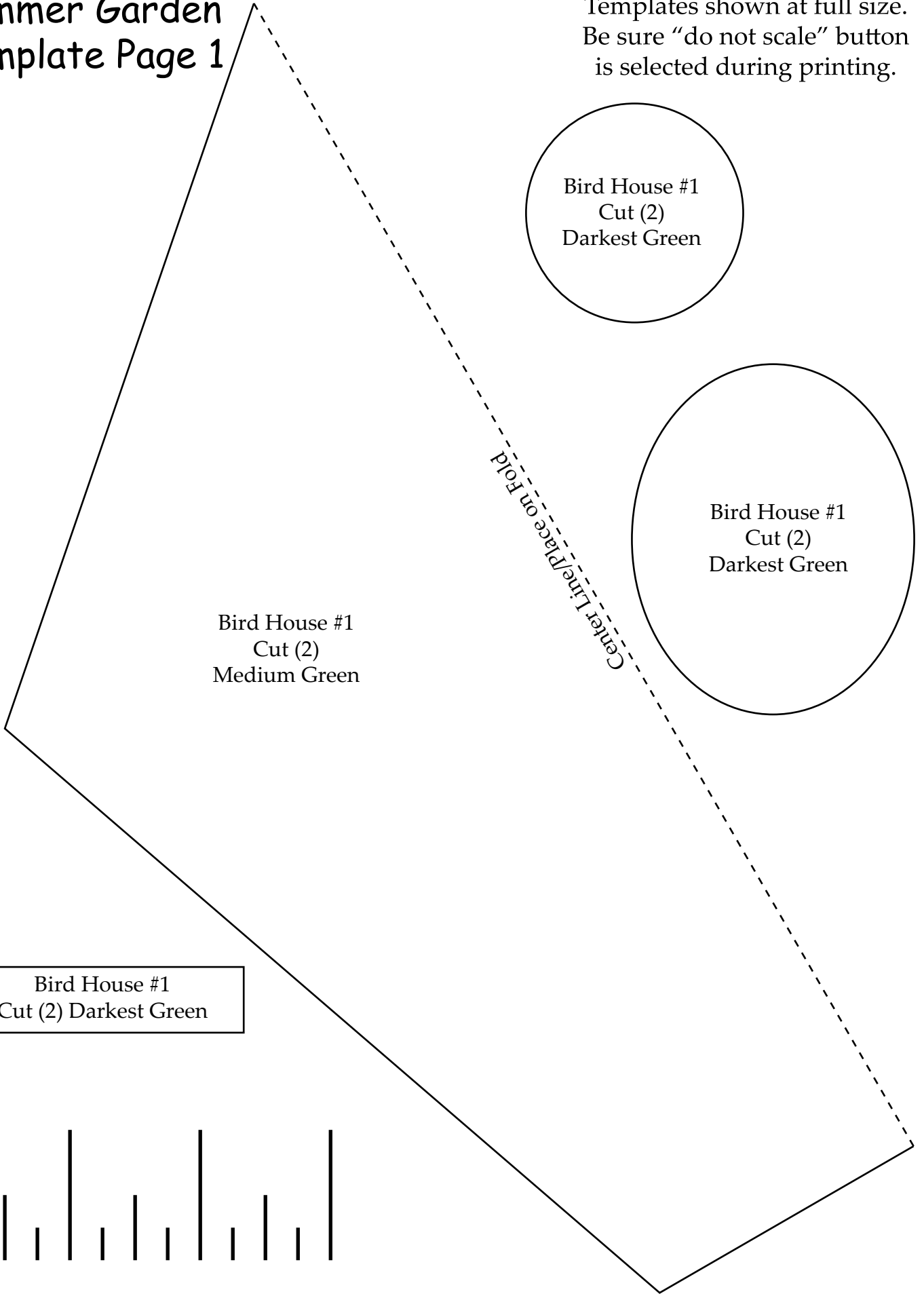
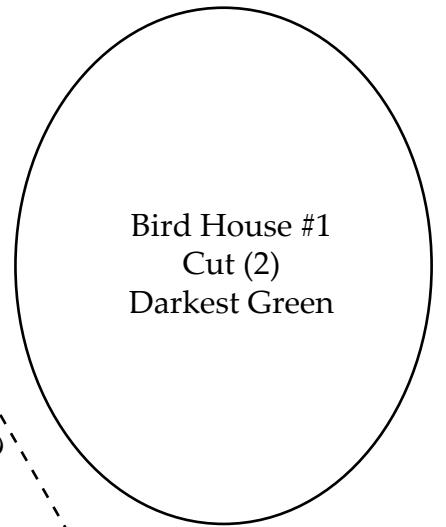
Row 4 Assembly Diagram



3. Using the quilt pictured on the cover as a guide to

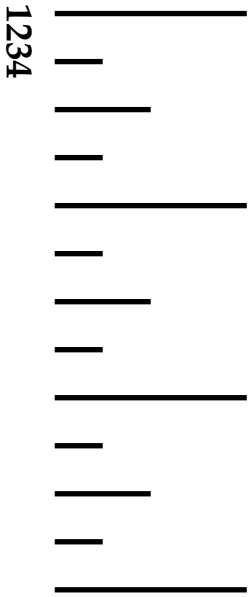
# Summer Garden Template Page 1

Templates shown at full size.  
Be sure "do not scale" button  
is selected during printing.



# Summer Garden Template Page 2

Templates shown at full size.  
Be sure "do not scale" button  
is selected during printing.



Center Line/  
Place on Fold

Center Line/  
Place on Fold

Bird  
House #1  
Roof  
Cut (2)  
Darkest  
Green

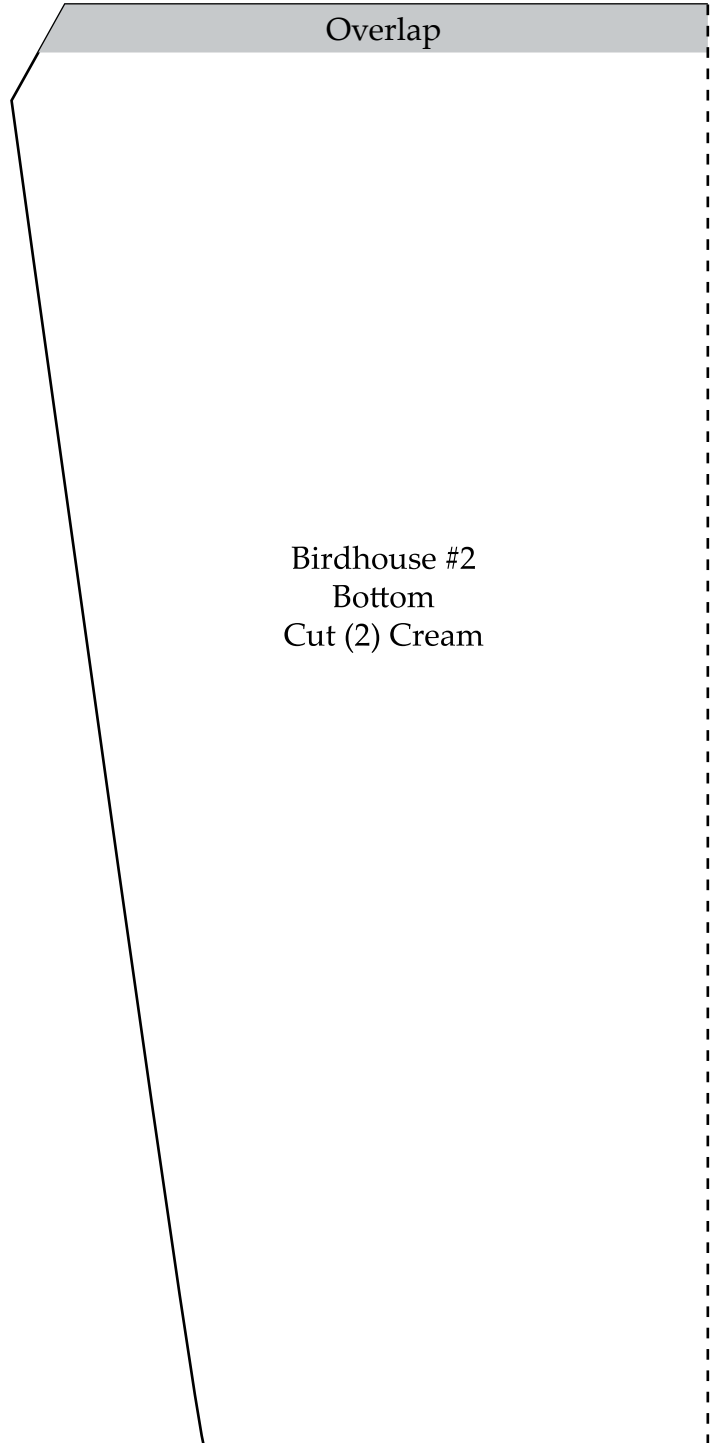
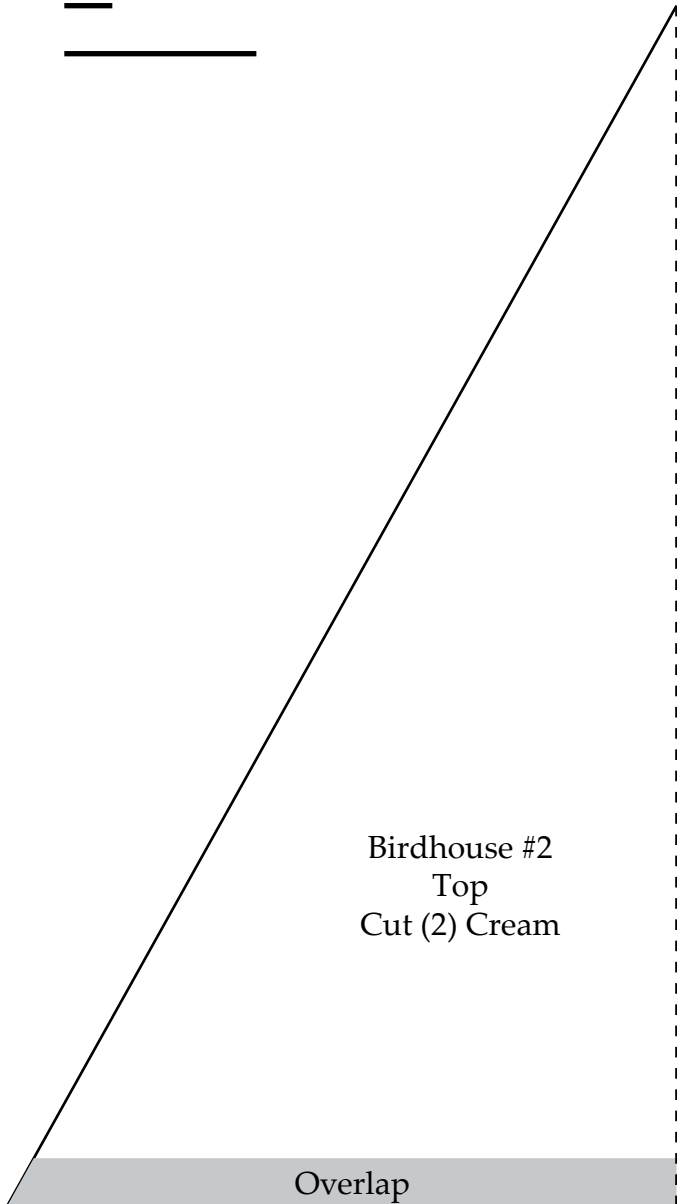
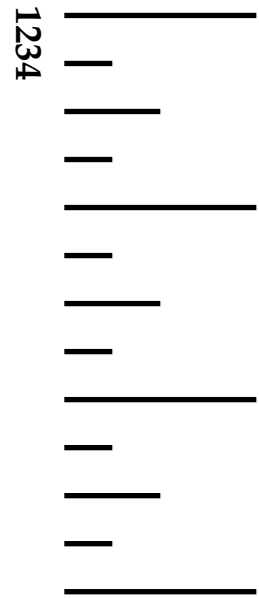
Bird  
House #2  
Cut (2)  
Brown

Bird  
House #2  
Roof  
Cut (2)  
Brown

Bird  
House #2  
Cut (2)  
Brown

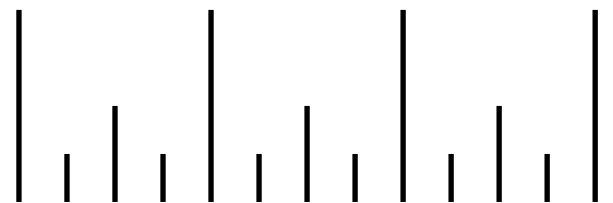
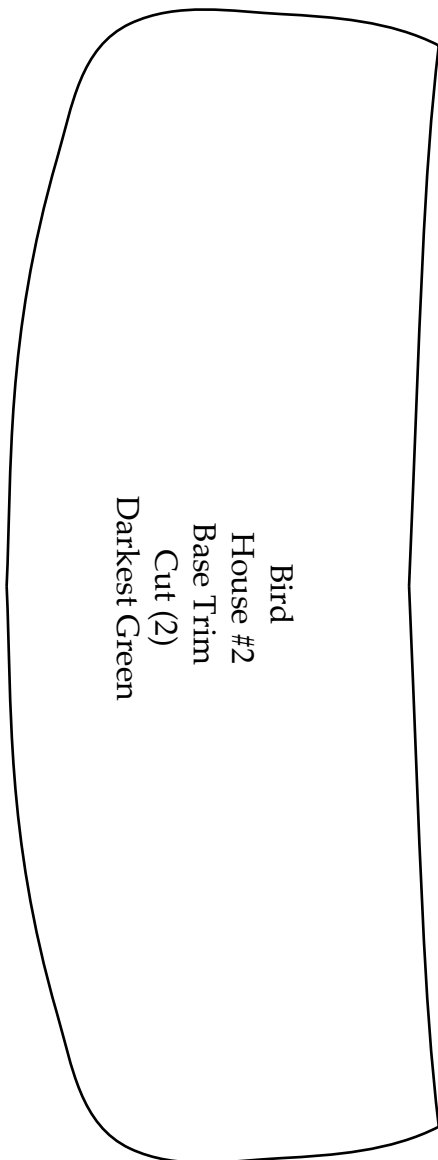
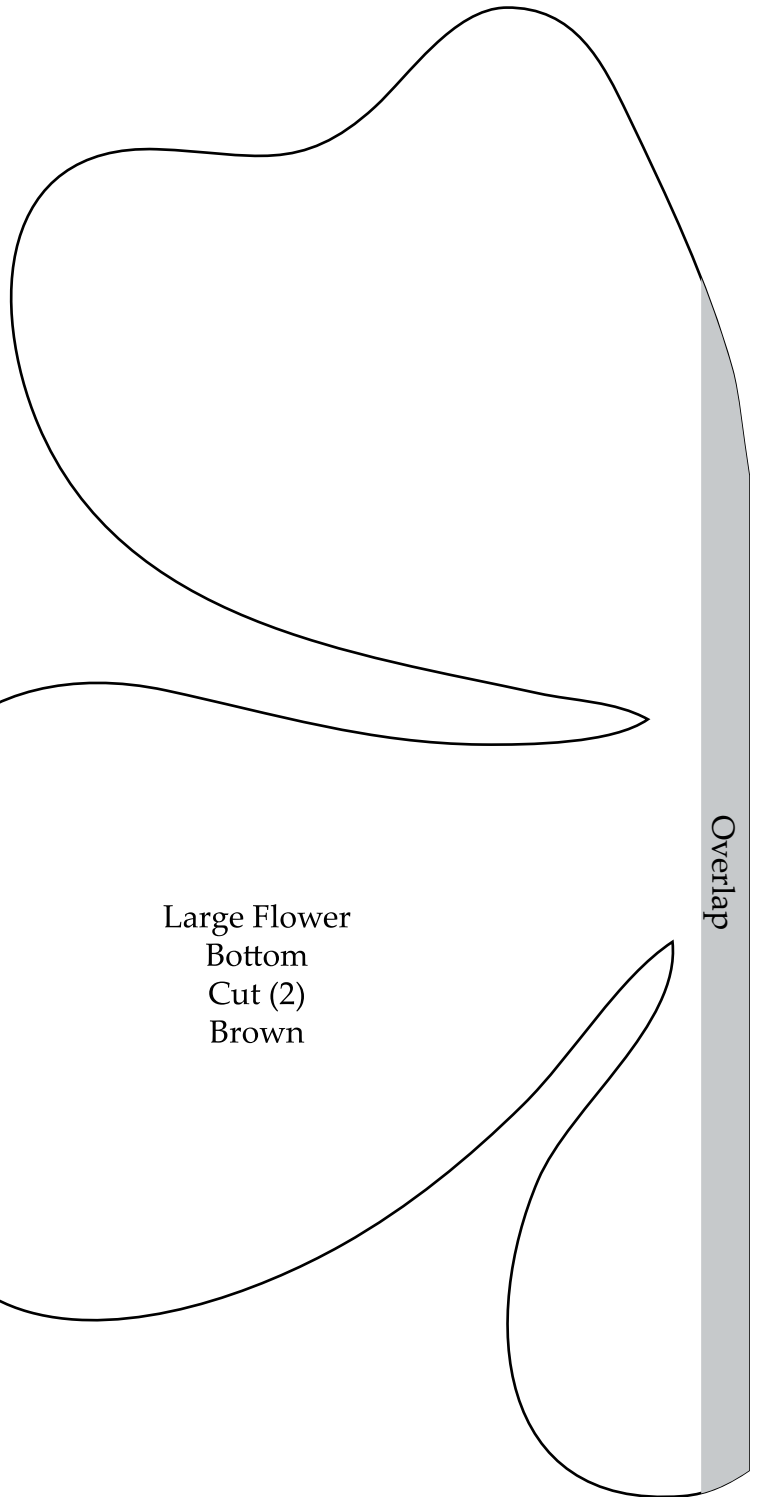
# Summer Garden Template Page 3

Templates shown at full size.  
Be sure "do not scale" button  
is selected during printing.



# Summer Garden Template Page 4

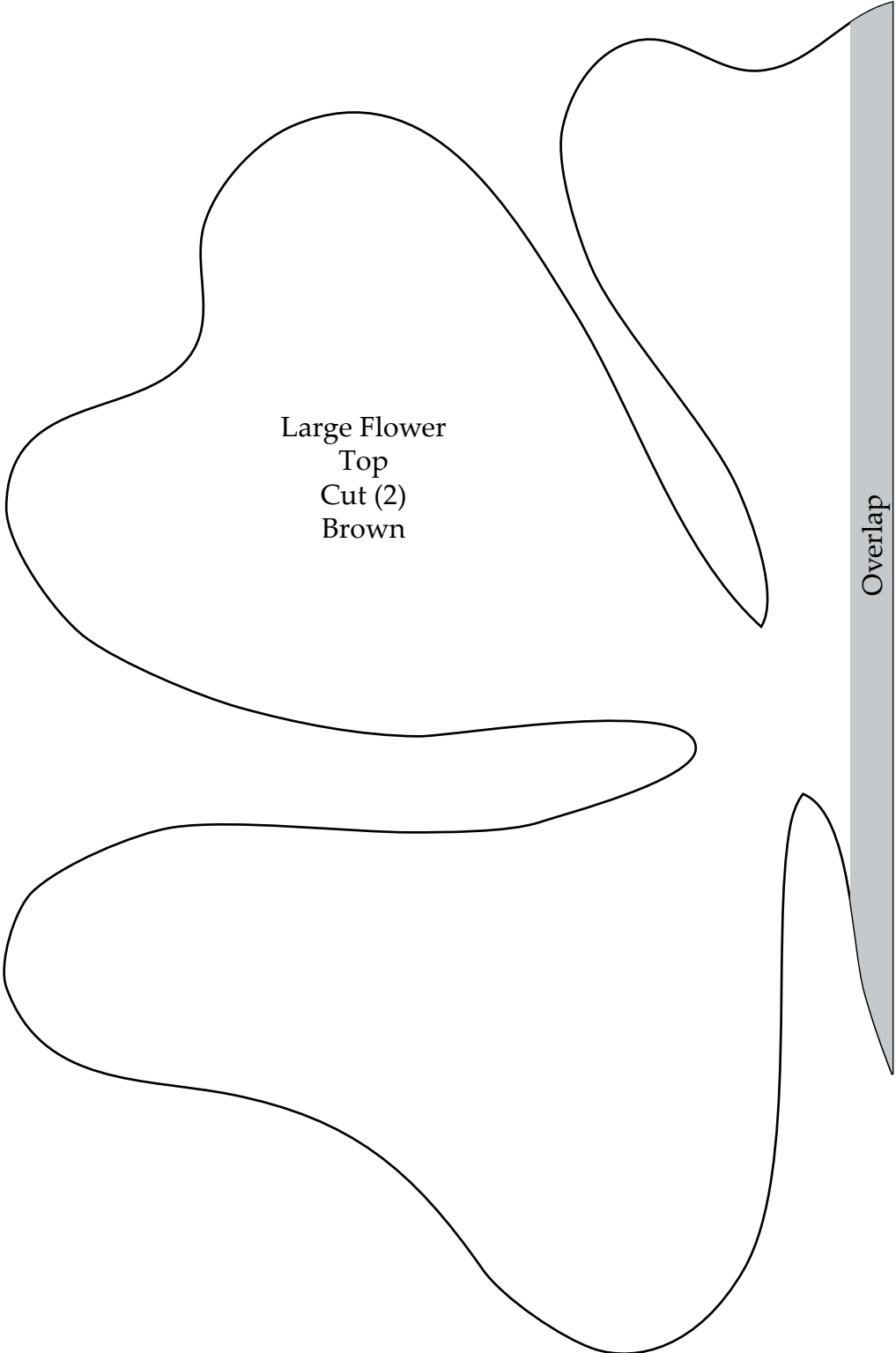
Templates shown at full size.  
Be sure "do not scale" button  
is selected during printing.





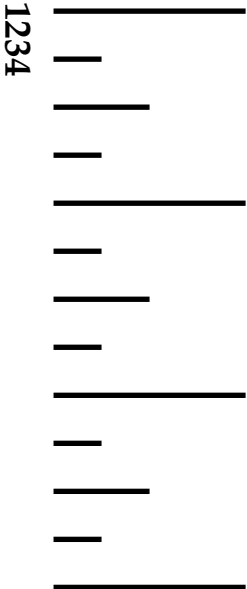
# Summer Garden Template Page 5

Templates shown at full size.  
Be sure "do not scale" button  
is selected during printing.



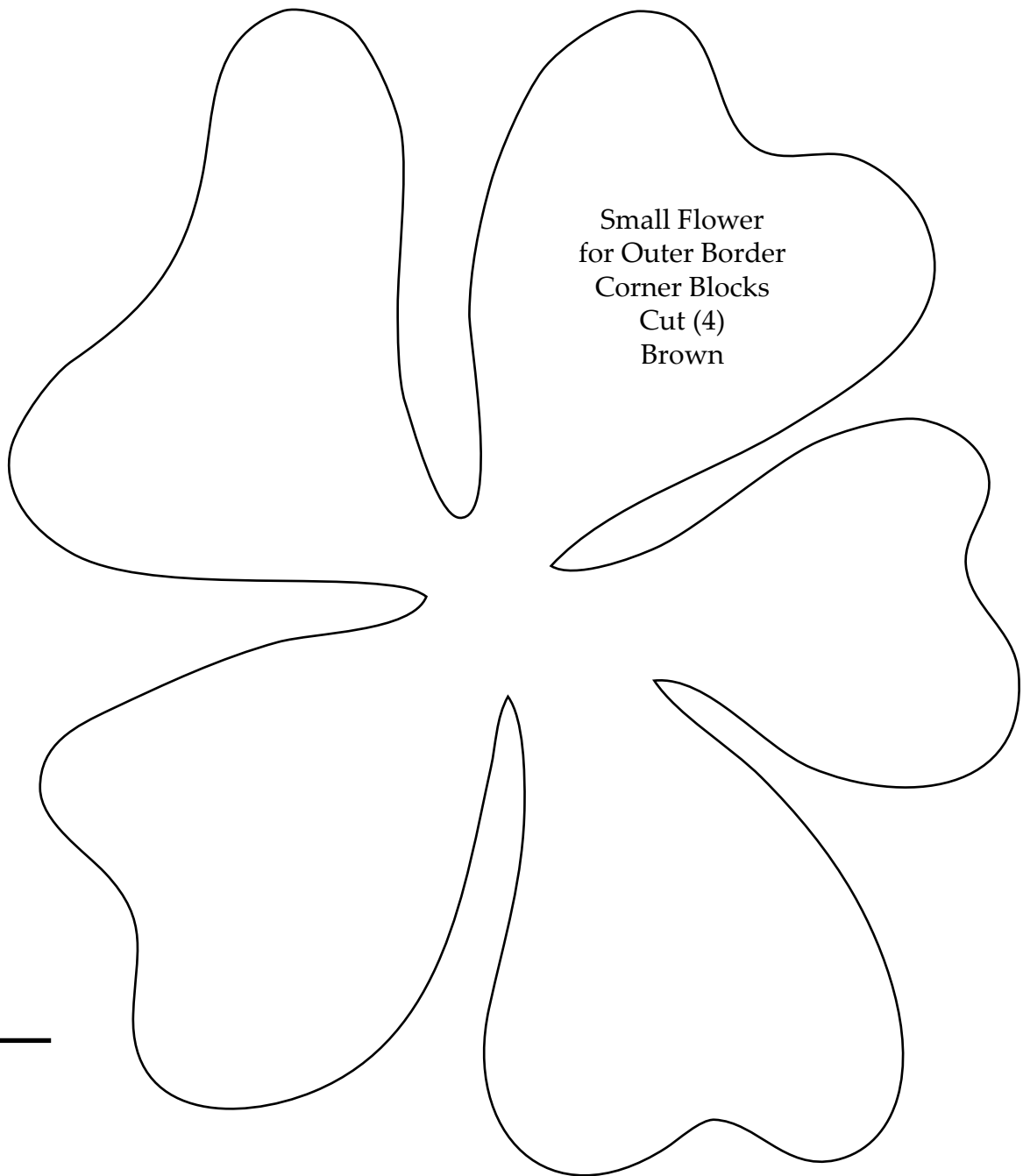
Large Flower  
Top  
Cut (2)  
Brown

Overlap

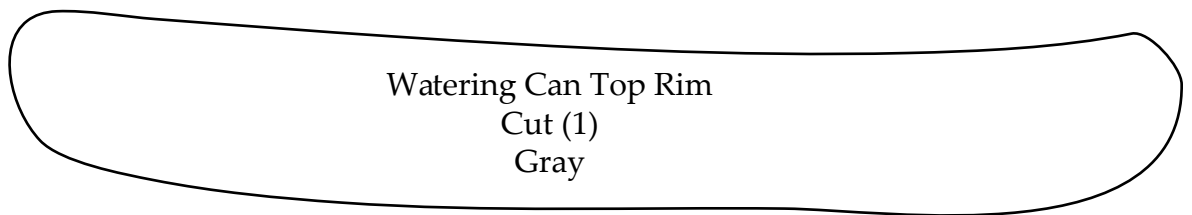
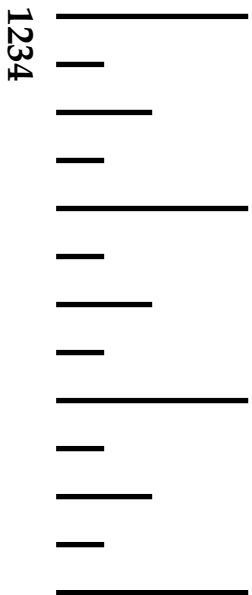


# Summer Garden Template Page 6

Templates shown at full size.  
Be sure "do not scale" button  
is selected during printing.



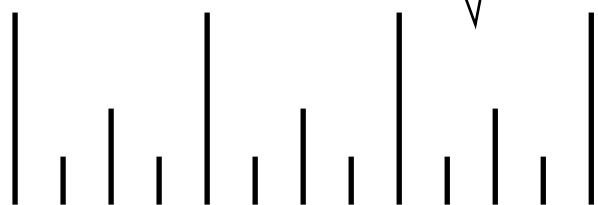
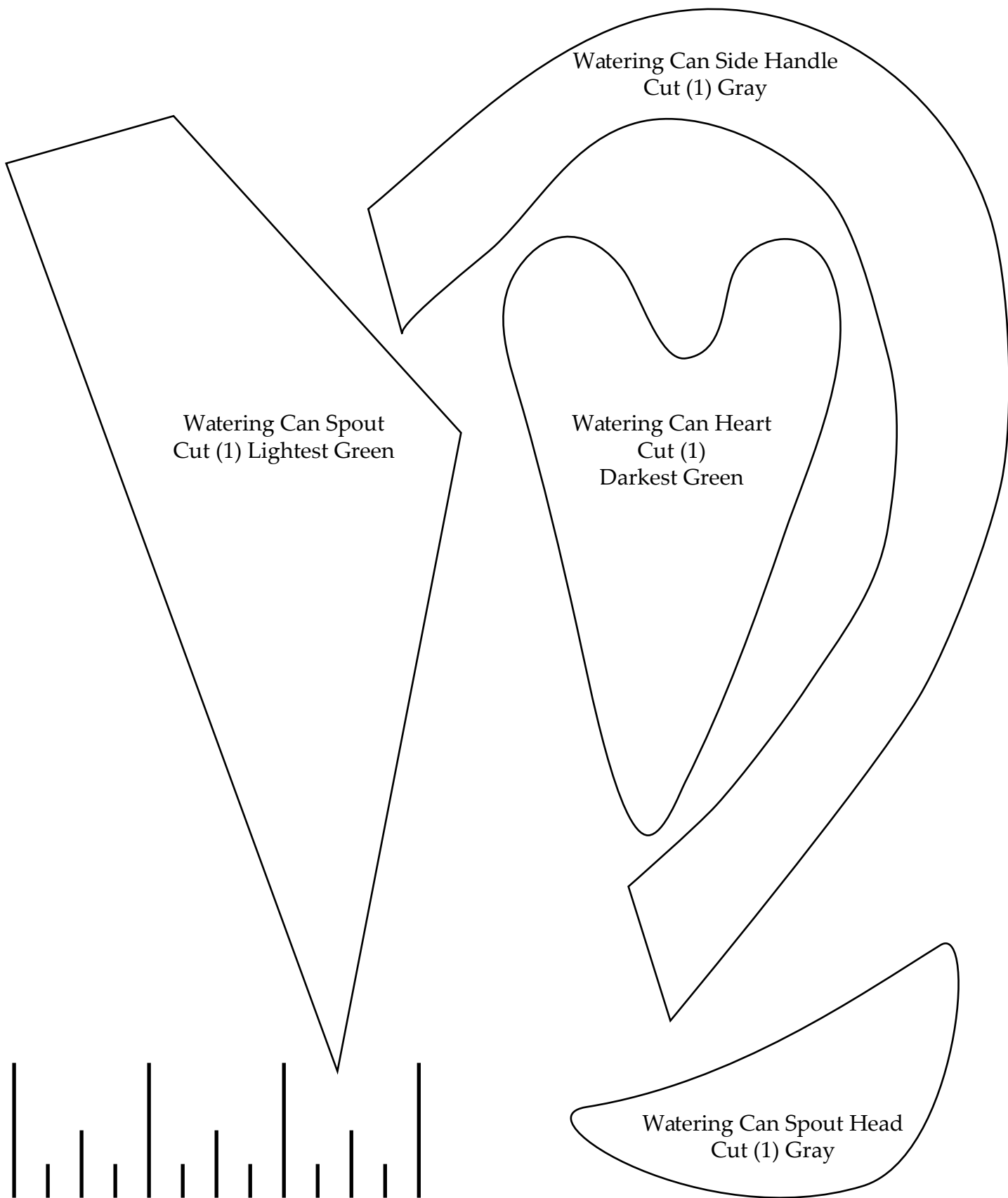
Small Flower  
for Outer Border  
Corner Blocks  
Cut (4)  
Brown



Watering Can Top Rim  
Cut (1)  
Gray

# Summer Garden Template Page 7

Templates shown at full size.  
Be sure "do not scale" button  
is selected during printing.



# Summer Garden Template Page 8

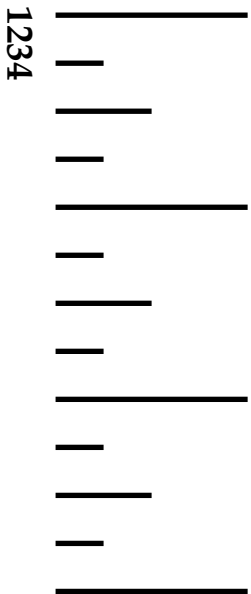
Templates shown at full size.  
Be sure "do not scale" button  
is selected during printing.

Watering Can  
Bottom Rim  
Left Side  
Cut (1)  
Gray

Watering Can Body  
Left Side  
Cut (1)  
Lightest Green

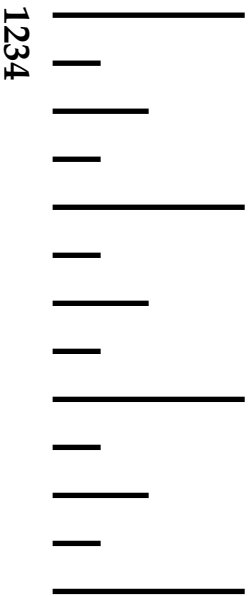
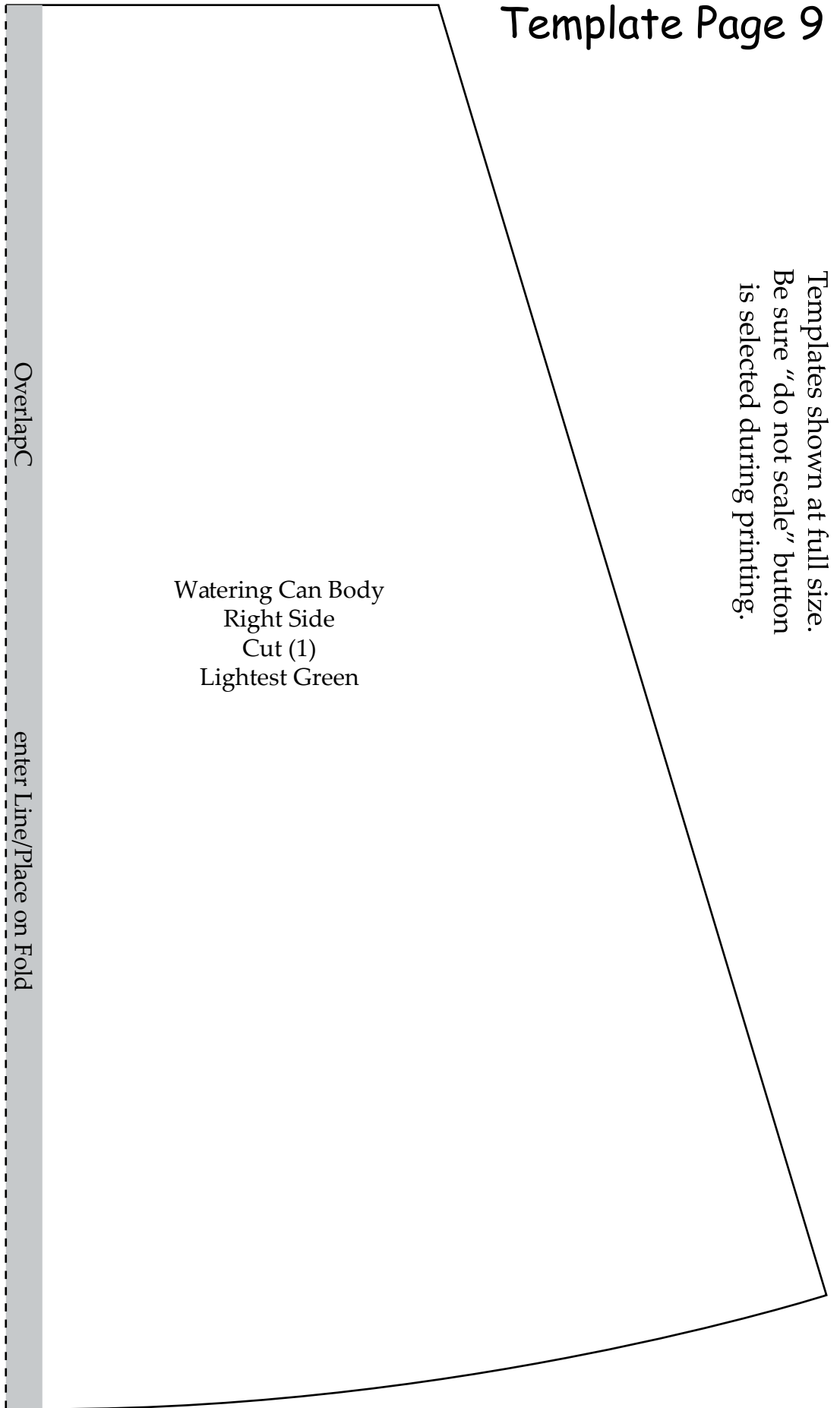
Center Line  
/Place on Fold Overlap

OverlapC enter Line/Place on Fold



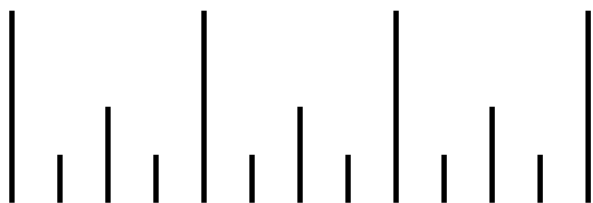
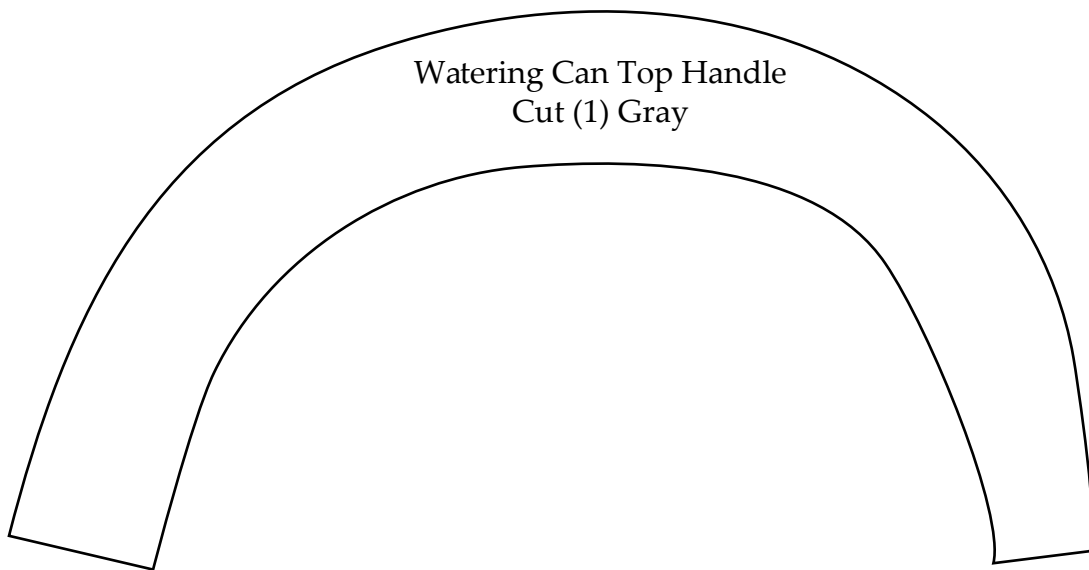
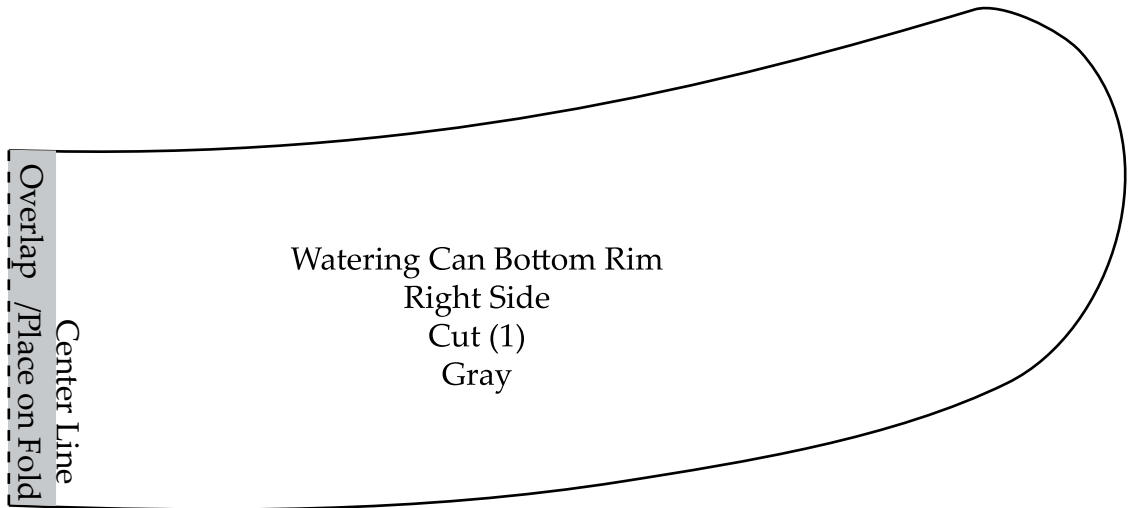
# Summer Garden Template Page 9

Templates shown at full size.  
Be sure "do not scale" button  
is selected during printing.



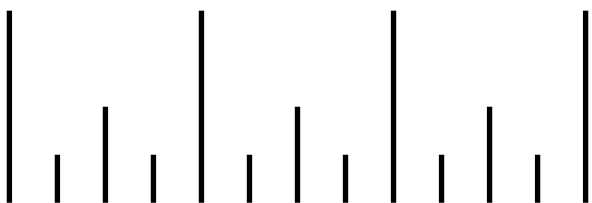
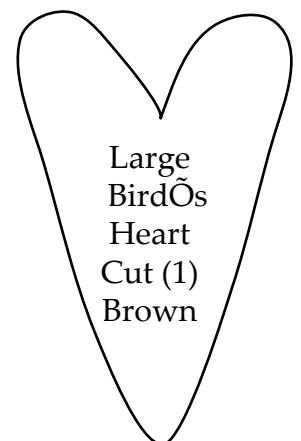
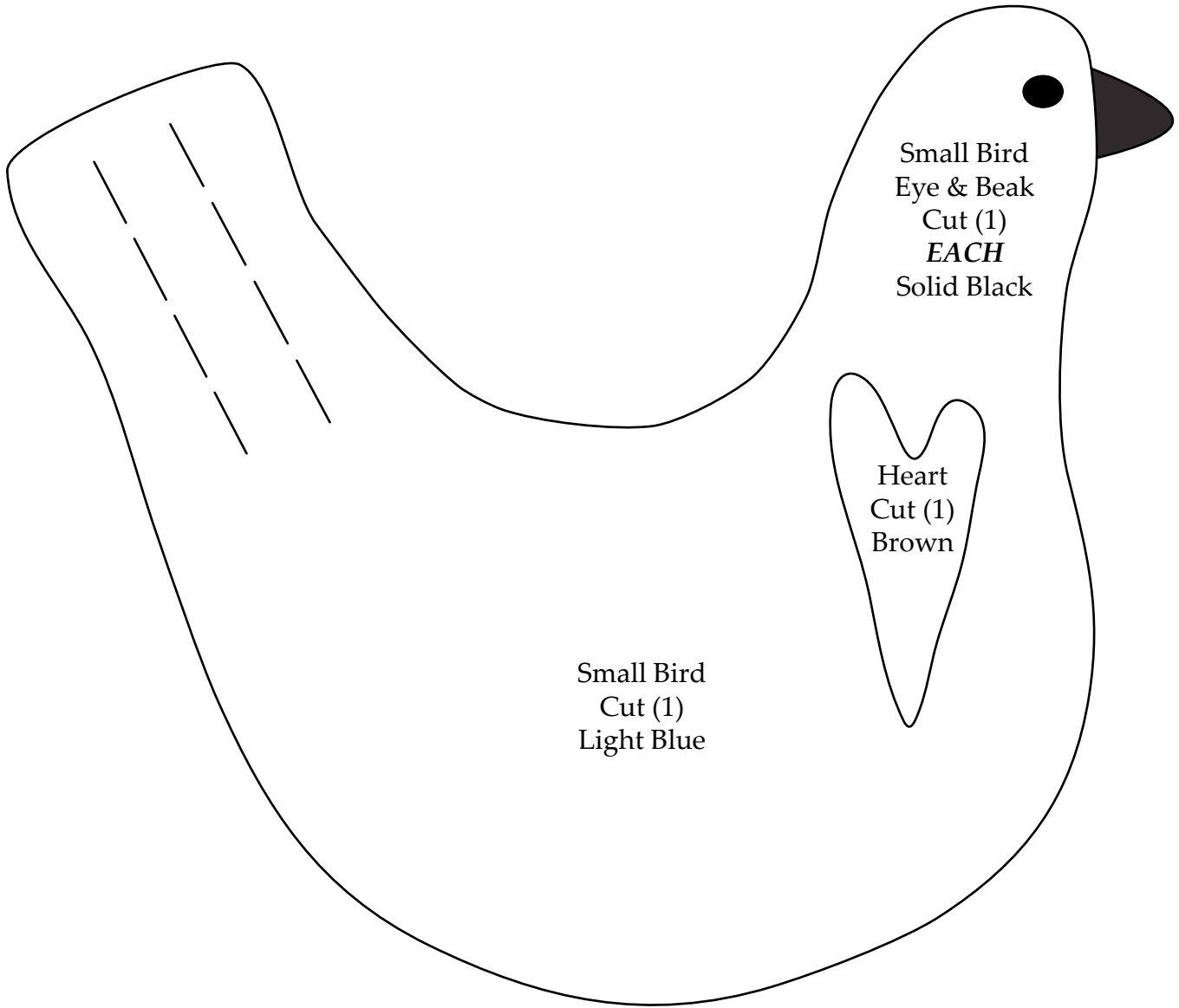
# Summer Garden Template Page 10

Templates shown at full size.  
Be sure "do not scale" button  
is selected during printing.



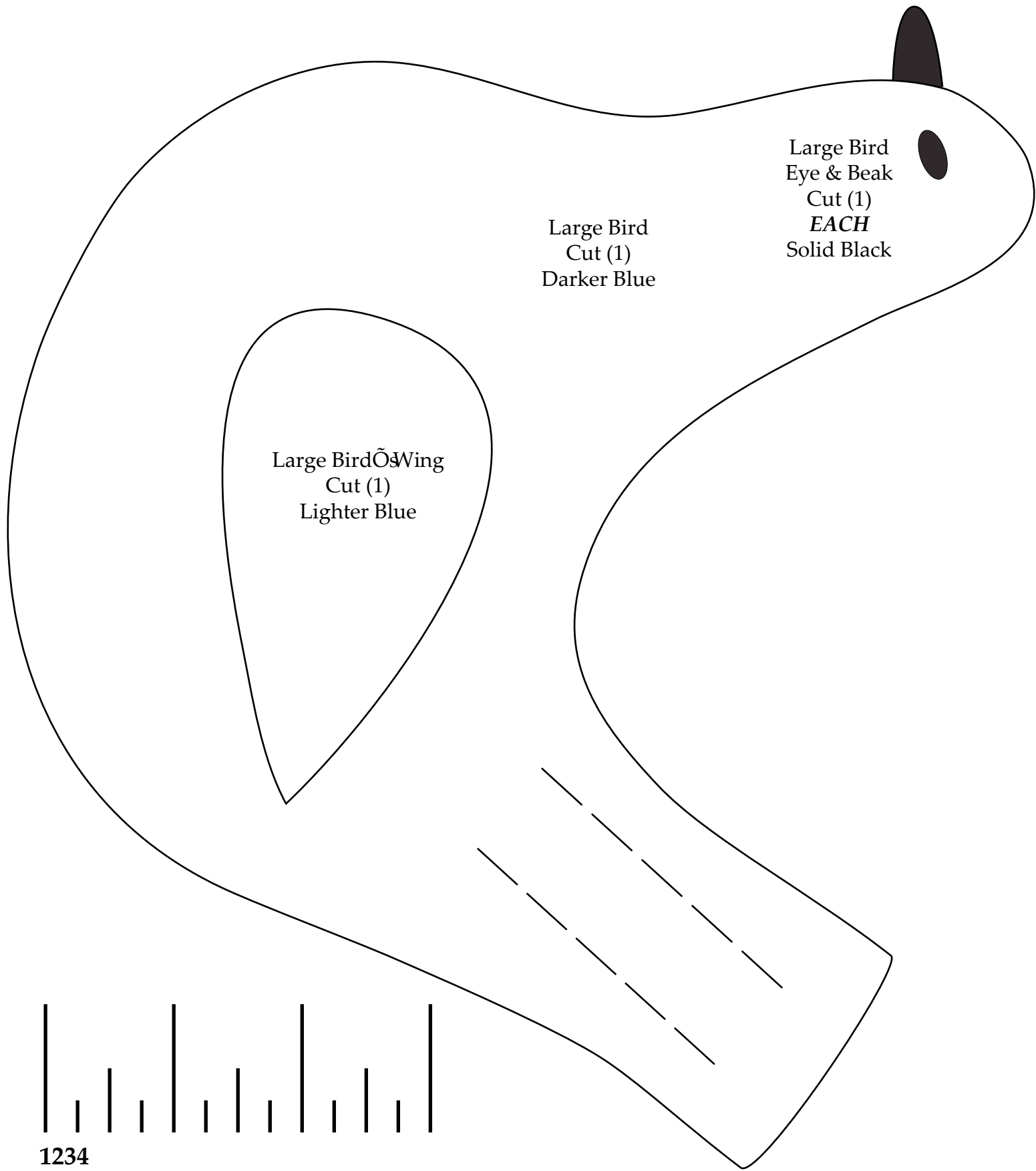
# Summer Garden Template Page 11

Templates shown at full size.  
Be sure "do not scale" button  
is selected during printing.



# Summer Garden Template Page 12

Templates shown at full size.  
Be sure "do not scale" button  
is selected during printing.



Large Bird  
Cut (1)  
Darker Blue

Large Bird  
Eye & Beak  
Cut (1)  
***EACH***  
Solid Black

Large Bird Wing  
Cut (1)  
Lighter Blue

